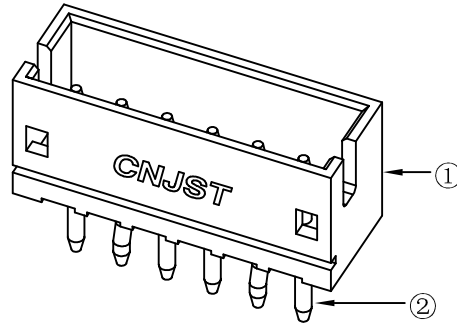
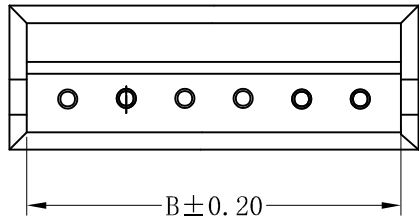
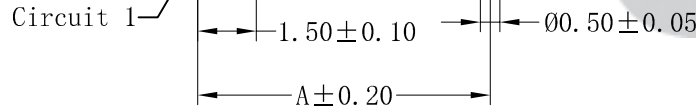
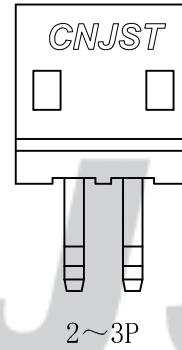
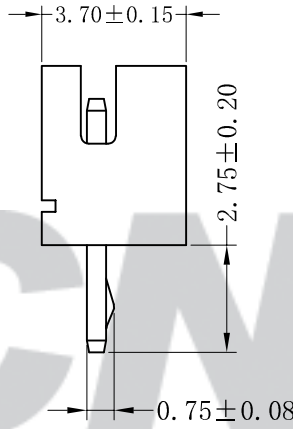
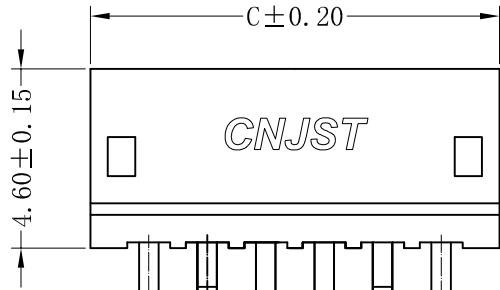


RoHS Compliant

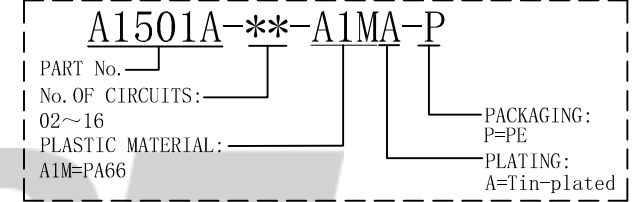


SPECIFICATION

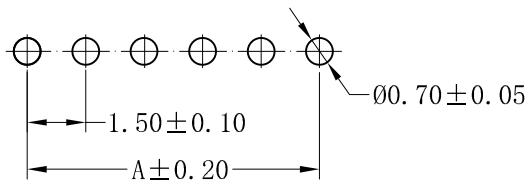
- 1 Contact resistance:  $\leq 20m\Omega$
- 2 Insulation resistance:  $\geq 500M\Omega$
- 3 Rated voltage: 125 V AC DC
- 4 Rated current: 1.0 A AC DC
- 5 Withstand Voltage: 500V AC/minute
- 6 Temperature Range:  $-25^{\circ}C \sim +85^{\circ}C$



ORDER INFORMATION:



2~5P (含5P) : 打K脚为第1枚和最后1枚  
6P及6P以上打K脚为第2枚和倒数第2枚



SUGGESTED PCB LAYOUT  
(COMPONENT SIDE)

Circuits	Dimensions (mm)			Circuits	Dimensions (mm)		
	A	B	C		A	B	C
02	1.50	3.60	4.50	10	13.50	15.60	16.50
03	3.00	5.10	6.00	11	15.00	17.10	18.00
04	4.50	6.60	7.50	12	16.50	18.60	19.50
05	6.00	8.10	9.00	13	18.00	20.10	21.00
06	7.50	9.60	10.50	14	19.50	21.60	22.50
07	9.00	11.10	12.00	15	21.00	23.10	24.00
08	10.50	12.60	13.50	16	22.50	24.60	25.50
09	12.00	14.10	15.00				

专利产品

								Tolerance X.X ±0.30 X.XX ±0.20 X.XXX ±0.10 Angle ±3.0°	<b>CNJST 捷仕泰企业</b>		Drawn: 王程伟 2022.06.24	
C/O	2022.06.24	统一标准, 更新模板	王程伟	②	Contacts	2~16	Brass	Tin-plated	Model No.: A1501A-**-A1MA-P		Checked: 吴丹平	
B/O	2018.01.09	NEW RELEASE		①	Insulator	1	PA66 (UL94V-0)	Nature	Model Name: 1.50mm PITCH 180° WAFER		Approved: 林旭芝	
REV.	DATE	DESCRIPTION	APPD.	NO.	DESCRIPTION	QTY	MATERIAL	PLATING/COLOR	UNIT: mm		SCALE: FULL	REVISION: C/0
1	2	3	4	5	6	7	8	9	0	DWG NO. CNJST/GCCP-0041		